



**Matthew G. Bevin**  
Governor

**COMMONWEALTH OF KENTUCKY  
TRANSPORTATION CABINET**  
Frankfort, Kentucky 40622  
[www.transportation.ky.gov/](http://www.transportation.ky.gov/)

**Greg Thomas**  
Secretary

March 12, 2019

CALL NO. 203  
CONTRACT ID NO. 195062  
ADDENDUM # 1

Subject: LESLIE-KNOX-BELL-WHITLEY COUNTIES, 121GR19D011 - STP  
Letting March 22, 2019

- (1) Revised - Proposal Bid Items - Pages 298-301(a) of 301
- (2) Added - Special Notes - Pages 1-8 of 8

Proposal revisions are available at <http://transportation.ky.gov/Construction-Procurement/>.

If you have any questions, please contact us at 502-564-3500.

Sincerely,

A handwritten signature in cursive script that reads "Rachel Mills".

Rachel Mills, P.E.  
Director  
Division of Construction Procurement

RM:mr  
Enclosures



An Equal Opportunity Employer M/F/D

**PROPOSAL BID ITEMS**

195062

Page 1 of 5

Report Date 3/12/19

**Section: 0001 - BRIDGE - 007B00040N**

| LINE | BID CODE | ALT | DESCRIPTION                                 | QUANTITY  | UNIT | UNIT PRIC | FP | AMOUNT |
|------|----------|-----|---|-----------|------|-----------|----|--------|
| 0010 | 02223    |     | GRANULAR EMBANKMENT                         | 28.00     | CUYD |           | \$ |        |
| 0020 | 02351    |     | GUARDRAIL-STEEL W BEAM-S FACE               | 37.50     | LF   |           | \$ |        |
| 0030 | 02355    |     | GUARDRAIL-STEEL W BEAM-S FACE A             | 100.00    | LF   |           | \$ |        |
| 0040 | 02360    |     | GUARDRAIL TERMINAL SECTION NO 1             | 1.00      | EACH |           | \$ |        |
| 0050 | 02367    |     | GUARDRAIL END TREATMENT TYPE 1              | 3.00      | EACH |           | \$ |        |
| 0060 | 02399    |     | EXTRA LENGTH GUARDRAIL POST                 | 32.00     | EACH |           | \$ |        |
| 0070 | 02545    |     | CLEARING AND GRUBBING<br>Less than 1 acre   | 1.00      | LS   |           | \$ |        |
| 0080 | 02650    |     | MAINTAIN & CONTROL TRAFFIC                  | 1.00      | LS   |           | \$ |        |
| 0090 | 02671    |     | PORTABLE CHANGEABLE MESSAGE SIGN            | 2.00      | EACH |           | \$ |        |
| 0100 | 02726    |     | STAKING                                     | 1.00      | LS   |           | \$ |        |
| 0110 | 02731    |     | REMOVE STRUCTURE                            | 1.00      | LS   |           | \$ |        |
| 0120 | 03299    |     | ARMORED EDGE FOR CONCRETE                   | 65.00     | LF   |           | \$ |        |
| 0130 | 03304    |     | BRIDGE OVERLAY APPROACH PAVEMENT            | 150.00    | SQYD |           | \$ |        |
| 0140 | 08003    |     | FOUNDATION PREPARATION                      | 1.00      | LS   |           | \$ |        |
| 0150 | 08019    |     | CYCLOPEAN STONE RIP RAP                     | 65.00     | TON  |           | \$ |        |
| 0160 | 08033    |     | TEST PILES                                  | 62.00     | LF   |           | \$ |        |
| 0170 | 08039    |     | PRE-DRILLING FOR PILES                      | 230.00    | LF   |           | \$ |        |
| 0180 | 08046    |     | PILES-STEEL HP12X53                         | 546.00    | LF   |           | \$ |        |
| 0190 | 08094    |     | PILE POINTS-12 IN                           | 23.00     | EACH |           | \$ |        |
| 0200 | 08100    |     | CONCRETE-CLASS A                            | 244.00    | CUYD |           | \$ |        |
| 0210 | 08104    |     | CONCRETE-CLASS AA                           | 29.00     | CUYD |           | \$ |        |
| 0220 | 08140    |     | MECHANICAL REINF COUPLER #5 EPOXY<br>COATED | 109.00    | EACH |           | \$ |        |
| 0230 | 08151    |     | STEEL REINFORCEMENT-EPOXY COATED            | 41,000.00 | LB   |           | \$ |        |
| 0240 | 08663    |     | PRECAST PC BOX BEAM CB21-48                 | 252.00    | LF   |           | \$ |        |
| 0250 | 08801    |     | GUARDRAIL-STEEL W BEAM-S FACE BR            | 72.00     | LF   |           | \$ |        |
| 0260 | 21415ND  |     | EROSION CONTROL                             | 1.00      | LS   |           | \$ |        |
| 0270 | 24982EC  |     | CONCRETE COATING<br>Approx. 3000 SF         | 1.00      | LS   |           | \$ |        |

**Section: 0002 - BRIDGE 0 061C00056N**

| LINE | BID CODE | ALT | DESCRIPTION                                      | QUANTITY | UNIT | UNIT PRIC | FP | AMOUNT |
|------|----------|-----|--|----------|------|-----------|----|--------|
| 0280 | 01987    |     | DELINEATOR FOR GUARDRAIL BI<br>DIRECTIONAL WHITE | 6.00     | EACH |           | \$ |        |
| 0290 | 02223    |     | GRANULAR EMBANKMENT                              | 25.00    | CUYD |           | \$ |        |
| 0300 | 02351    |     | GUARDRAIL-STEEL W BEAM-S FACE                    | 12.50    | LF   |           | \$ |        |
| 0310 | 02355    |     | GUARDRAIL-STEEL W BEAM-S FACE A                  | 100.00   | LF   |           | \$ |        |
| 0320 | 02371    |     | GUARDRAIL END TREATMENT TYPE 7                   | 4.00     | EACH |           | \$ |        |
| 0330 | 02399    |     | EXTRA LENGTH GUARDRAIL POST                      | 16.00    | EACH |           | \$ |        |
| 0340 | 02545    |     | CLEARING AND GRUBBING<br>Less than 1 acre        | 1.00     | LS   |           | \$ |        |
| 0350 | 02650    |     | MAINTAIN & CONTROL TRAFFIC                       | 1.00     | LS   |           | \$ |        |
| 0360 | 02671    |     | PORTABLE CHANGEABLE MESSAGE SIGN                 | 2.00     | EACH |           | \$ |        |
| 0370 | 02726    |     | STAKING  | 1.00     | LS   |           | \$ |        |
| 0380 | 02731    |     | REMOVE STRUCTURE                                 | 1.00     | LS   |           | \$ |        |

**PROPOSAL BID ITEMS**

195062

Page 2 of 5

Report Date 3/12/19

| LINE | BID CODE | ALT | DESCRIPTION                         | QUANTITY | UNIT | UNIT PRIC | FP | AMOUNT |
|------|----------|-----|-------------------------------------|----------|------|-----------|----|--------|
| 0390 | 03299    |     | ARMORED EDGE FOR CONCRETE           | 32.00    | LF   |           | \$ |        |
| 0400 | 03304    |     | BRIDGE OVERLAY APPROACH PAVEMENT    | 106.00   | SQYD |           | \$ |        |
| 0410 | 08003    |     | FOUNDATION PREPARATION              | 1.00     | LS   |           | \$ |        |
| 0420 | 08019    |     | CYCLOPEAN STONE RIP RAP             | 158.00   | TON  |           | \$ |        |
| 0430 | 08046    |     | PILES-STEEL HP12X53                 | 185.00   | LF   |           | \$ |        |
| 0440 | 08100    |     | CONCRETE-CLASS A                    | 62.00    | CUYD |           | \$ |        |
| 0450 | 08104    |     | CONCRETE-CLASS AA                   | 22.00    | CUYD |           | \$ |        |
| 0460 | 08151    |     | STEEL REINFORCEMENT-EPOXY COATED    | 5,832.00 | LB   |           | \$ |        |
| 0470 | 08662    |     | PRECAST PC BOX BEAM CB17-48         | 172.00   | LF   |           | \$ |        |
| 0480 | 08801    |     | GUARDRAIL-STEEL W BEAM-S FACE BR    | 75.00    | LF   |           | \$ |        |
| 0490 | 21415ND  |     | EROSION CONTROL                     | 1.00     | LS   |           | \$ |        |
| 0500 | 24982EC  |     | CONCRETE COATING<br>Approx. 1100 SF | 1.00     | LS   |           | \$ |        |

**Section: 0003 - BRIDGE - 061C00063N**

| LINE | BID CODE | ALT | DESCRIPTION                                      | QUANTITY | UNIT | UNIT PRIC | FP | AMOUNT |
|------|----------|-----|--|----------|------|-----------|----|--------|
| 0510 | 01987    |     | DELINEATOR FOR GUARDRAIL BI<br>DIRECTIONAL WHITE | 12.00    | EACH |           | \$ |        |
| 0520 | 02223    |     | GRANULAR EMBANKMENT                              | 28.00    | CUYD |           | \$ |        |
| 0530 | 02355    |     | GUARDRAIL-STEEL W BEAM-S FACE A                  | 100.00   | LF   |           | \$ |        |
| 0540 | 02371    |     | GUARDRAIL END TREATMENT TYPE 7                   | 4.00     | EACH |           | \$ |        |
| 0550 | 02381    |     | REMOVE GUARDRAIL                                 | 25.00    | LF   |           | \$ |        |
| 0560 | 02399    |     | EXTRA LENGTH GUARDRAIL POST                      | 32.00    | EACH |           | \$ |        |
| 0570 | 02545    |     | CLEARING AND GRUBBING<br>Less than 1 acre        | 1.00     | LS   |           | \$ |        |
| 0580 | 02650    |     | MAINTAIN & CONTROL TRAFFIC                       | 1.00     | LS   |           | \$ |        |
| 0590 | 02671    |     | PORTABLE CHANGEABLE MESSAGE SIGN                 | 2.00     | EACH |           | \$ |        |
| 0600 | 02726    |     | STAKING  | 1.00     | LS   |           | \$ |        |
| 0610 | 02731    |     | REMOVE STRUCTURE                                 | 1.00     | LS   |           | \$ |        |
| 0620 | 03299    |     | ARMORED EDGE FOR CONCRETE                        | 48.00    | LF   |           | \$ |        |
| 0630 | 03304    |     | BRIDGE OVERLAY APPROACH PAVEMENT                 | 226.00   | SQYD |           | \$ |        |
| 0640 | 08003    |     | FOUNDATION PREPARATION                           | 1.00     | LS   |           | \$ |        |
| 0650 | 08019    |     | CYCLOPEAN STONE RIP RAP                          | 323.00   | TON  |           | \$ |        |
| 0660 | 08033    |     | TEST PILES                                       | 24.00    | LF   |           | \$ |        |
| 0670 | 08039    |     | PRE-DRILLING FOR PILES                           | 100.00   | LF   |           | \$ |        |
| 0680 | 08046    |     | PILES-STEEL HP12X53                              | 96.00    | LF   |           | \$ |        |
| 0690 | 08094    |     | PILE POINTS-12 IN                                | 10.00    | EACH |           | \$ |        |
| 0700 | 08100    |     | CONCRETE-CLASS A                                 | 29.60    | CUYD |           | \$ |        |
| 0710 | 08104    |     | CONCRETE-CLASS AA                                | 22.60    | CUYD |           | \$ |        |
| 0720 | 08151    |     | STEEL REINFORCEMENT-EPOXY COATED                 | 5,702.00 | LB   |           | \$ |        |
| 0730 | 08663    |     | PRECAST PC BOX BEAM CB21-48                      | 333.00   | LF   |           | \$ |        |
| 0740 | 08801    |     | GUARDRAIL-STEEL W BEAM-S FACE BR                 | 111.00   | LF   |           | \$ |        |
| 0750 | 21415ND  |     | EROSION CONTROL                                  | 1.00     | LS   |           | \$ |        |
| 0760 | 24982EC  |     | CONCRETE COATING<br>Approx. 290 SF               | 1.00     | LS   |           | \$ |        |

**Section: 0004 - BRIDGE - 066C00002N**

**PROPOSAL BID ITEMS**

195062

Page 3 of 5

Report Date 3/12/19

| LINE | BID CODE | ALT | DESCRIPTION                               | QUANTITY  | UNIT | UNIT PRIC | FP | AMOUNT |
|------|----------|-----|---|-----------|------|-----------|----|--------|
| 0770 | 02223    |     | GRANULAR EMBANKMENT                       | 28.00     | CUYD |           | \$ |        |
| 0780 | 02355    |     | GUARDRAIL-STEEL W BEAM-S FACE A           | 100.00    | LF   |           | \$ |        |
| 0790 | 02371    |     | GUARDRAIL END TREATMENT TYPE 7            | 4.00      | EACH |           | \$ |        |
| 0800 | 02399    |     | EXTRA LENGTH GUARDRAIL POST               | 32.00     | EACH |           | \$ |        |
| 0810 | 02545    |     | CLEARING AND GRUBBING<br>Less than 1 acre | 1.00      | LS   |           | \$ |        |
| 0820 | 02650    |     | MAINTAIN & CONTROL TRAFFIC                | 1.00      | LS   |           | \$ |        |
| 0830 | 02671    |     | PORTABLE CHANGEABLE MESSAGE SIGN          | 2.00      | EACH |           | \$ |        |
| 0840 | 02726    |     | STAKING                                   | 1.00      | LS   |           | \$ |        |
| 0850 | 02731    |     | REMOVE STRUCTURE                          | 1.00      | LS   |           | \$ |        |
| 0860 | 03299    |     | ARMORED EDGE FOR CONCRETE                 | 32.00     | LF   |           | \$ |        |
| 0870 | 03304    |     | BRIDGE OVERLAY APPROACH PAVEMENT          | 134.00    | SQYD |           | \$ |        |
| 0880 | 08002    |     | STRUCTURE EXCAV-SOLID ROCK                | 55.00     | CUYD |           | \$ |        |
| 0890 | 08003    |     | FOUNDATION PREPARATION                    | 1.00      | LS   |           | \$ |        |
| 0900 | 08019    |     | CYCLOPEAN STONE RIP RAP                   | 20.00     | TON  |           | \$ |        |
| 0910 | 08100    |     | CONCRETE-CLASS A                          | 105.00    | CUYD |           | \$ |        |
| 0920 | 08104    |     | CONCRETE-CLASS AA                         | 21.00     | CUYD |           | \$ |        |
| 0930 | 08151    |     | STEEL REINFORCEMENT-EPOXY COATED          | 19,000.00 | LB   |           | \$ |        |
| 0940 | 08663    |     | PRECAST PC BOX BEAM CB21-48               | 208.00    | LF   |           | \$ |        |
| 0950 | 08801    |     | GUARDRAIL-STEEL W BEAM-S FACE BR          | 104.00    | LF   |           | \$ |        |
| 0960 | 21415ND  |     | EROSION CONTROL                           | 1.00      | LS   |           | \$ |        |
| 0970 | 24982EC  |     | CONCRETE COATING<br>Approx. 2000 SF       | 1.00      | LS   |           | \$ |        |

**Section: 0005 - BRIDGE - 118B00079N**

| LINE | BID CODE | ALT | DESCRIPTION                               | QUANTITY  | UNIT | UNIT PRIC | FP | AMOUNT |
|------|----------|-----|---|-----------|------|-----------|----|--------|
| 0980 | 02223    |     | GRANULAR EMBANKMENT                       | 28.00     | CUYD |           | \$ |        |
| 0990 | 02355    |     | GUARDRAIL-STEEL W BEAM-S FACE A           | 125.00    | LF   |           | \$ |        |
| 1000 | 02399    |     | EXTRA LENGTH GUARDRAIL POST               | 32.00     | EACH |           | \$ |        |
| 1010 | 02545    |     | CLEARING AND GRUBBING<br>Less than 1 acre | 1.00      | LS   |           | \$ |        |
| 1020 | 02650    |     | MAINTAIN & CONTROL TRAFFIC                | 1.00      | LS   |           | \$ |        |
| 1030 | 02671    |     | PORTABLE CHANGEABLE MESSAGE SIGN          | 2.00      | EACH |           | \$ |        |
| 1040 | 02726    |     | STAKING                                   | 1.00      | LS   |           | \$ |        |
| 1050 | 02731    |     | REMOVE STRUCTURE                          | 1.00      | LS   |           | \$ |        |
| 1060 | 03299    |     | ARMORED EDGE FOR CONCRETE                 | 45.00     | LF   |           | \$ |        |
| 1070 | 03304    |     | BRIDGE OVERLAY APPROACH PAVEMENT          | 160.00    | SQYD |           | \$ |        |
| 1080 | 08003    |     | FOUNDATION PREPARATION                    | 1.00      | LS   |           | \$ |        |
| 1090 | 08019    |     | CYCLOPEAN STONE RIP RAP                   | 85.00     | TON  |           | \$ |        |
| 1100 | 08033    |     | TEST PILES                                | 52.00     | LF   |           | \$ |        |
| 1110 | 08046    |     | PILES-STEEL HP12X53                       | 210.00    | LF   |           | \$ |        |
| 1120 | 08094    |     | PILE POINTS-12 IN                         | 12.00     | EACH |           | \$ |        |
| 1130 | 08100    |     | CONCRETE-CLASS A                          | 124.00    | CUYD |           | \$ |        |
| 1140 | 08104    |     | CONCRETE-CLASS AA                         | 20.00     | CUYD |           | \$ |        |
| 1150 | 08151    |     | STEEL REINFORCEMENT-EPOXY COATED          | 21,750.00 | LB   |           | \$ |        |
| 1160 | 08661    |     | PRECAST PC BOX BEAM CB12-48               | 120.00    | LF   |           | \$ |        |
| 1170 | 08801    |     | GUARDRAIL-STEEL W BEAM-S FACE BR          | 48.00     | LF   |           | \$ |        |
| 1180 | 21415ND  |     | EROSION CONTROL                           | 1.00      | LS   |           | \$ |        |

**PROPOSAL BID ITEMS**

195062

Page 4 of 5

Report Date 3/12/19

| LINE | BID CODE | ALT | DESCRIPTION                               | QUANTITY | UNIT | UNIT PRIC | FP | AMOUNT |
|------|----------|-----|---|----------|------|-----------|----|--------|
| 1190 | 24982EC  |     | CONCRETE COATING<br>Approximately 1785 SF | 1.00     | LS   |           | \$ |        |

**Section: 0006 - BRIDGE - 118C00029N**

| LINE | BID CODE | ALT | DESCRIPTION                               | QUANTITY  | UNIT | UNIT PRIC | FP | AMOUNT |
|------|----------|-----|---|-----------|------|-----------|----|--------|
| 1200 | 02223    |     | GRANULAR EMBANKMENT                       | 28.00     | CUYD |           | \$ |        |
| 1210 | 02355    |     | GUARDRAIL-STEEL W BEAM-S FACE A           | 100.00    | LF   |           | \$ |        |
| 1220 | 02371    |     | GUARDRAIL END TREATMENT TYPE 7            | 4.00      | EACH |           | \$ |        |
| 1230 | 02399    |     | EXTRA LENGTH GUARDRAIL POST               | 32.00     | EACH |           | \$ |        |
| 1240 | 02545    |     | CLEARING AND GRUBBING<br>Less than 1 acre | 1.00      | LS   |           | \$ |        |
| 1250 | 02650    |     | MAINTAIN & CONTROL TRAFFIC                | 1.00      | LS   |           | \$ |        |
| 1260 | 02671    |     | PORTABLE CHANGEABLE MESSAGE SIGN          | 2.00      | EACH |           | \$ |        |
| 1270 | 02726    |     | STAKING                                   | 1.00      | LS   |           | \$ |        |
| 1280 | 02731    |     | REMOVE STRUCTURE                          | 1.00      | LS   |           | \$ |        |
| 1290 | 03299    |     | ARMORED EDGE FOR CONCRETE                 | 32.00     | LF   |           | \$ |        |
| 1300 | 03304    |     | BRIDGE OVERLAY APPROACH PAVEMENT          | 63.00     | SQYD |           | \$ |        |
| 1310 | 08003    |     | FOUNDATION PREPARATION                    | 1.00      | LS   |           | \$ |        |
| 1320 | 08019    |     | CYCLOPEAN STONE RIP RAP                   | 80.00     | TON  |           | \$ |        |
| 1330 | 08033    |     | TEST PILES                                | 44.00     | LF   |           | \$ |        |
| 1340 | 08039    |     | PRE-DRILLING FOR PILES                    | 110.00    | LF   |           | \$ |        |
| 1350 | 08046    |     | PILES-STEEL HP12X53                       | 136.00    | LF   |           | \$ |        |
| 1360 | 08094    |     | PILE POINTS-12 IN                         | 10.00     | EACH |           | \$ |        |
| 1370 | 08100    |     | CONCRETE-CLASS A                          | 56.70     | CUYD |           | \$ |        |
| 1380 | 08104    |     | CONCRETE-CLASS AA                         | 19.50     | CUYD |           | \$ |        |
| 1390 | 08151    |     | STEEL REINFORCEMENT-EPOXY COATED          | 11,500.00 | LB   |           | \$ |        |
| 1400 | 08662    |     | PRECAST PC BOX BEAM CB17-48               | 184.00    | LF   |           | \$ |        |
| 1410 | 08801    |     | GUARDRAIL-STEEL W BEAM-S FACE BR          | 92.00     | LF   |           | \$ |        |
| 1420 | 21415ND  |     | EROSION CONTROL                           | 1.00      | LS   |           | \$ |        |
| 1430 | 24982EC  |     | CONCRETE COATING<br>Approximately 1105 SF | 1.00      | LS   |           | \$ |        |

**Section: 0007 - DEMOBILIZATION**

| LINE | BID CODE | ALT | DESCRIPTION                                      | QUANTITY | UNIT | UNIT PRIC | FP | AMOUNT |
|------|----------|-----|--|----------|------|-----------|----|--------|
| 1432 | 02568    |     | MOBILIZATION<br>(ADDED: 3-12-19)<br>(007B00040N) | 1.00     | LS   |           | \$ |        |
| 1433 | 02568    |     | MOBILIZATION<br>(ADDED: 3-12-19)<br>(061C00056N) | 1.00     | LS   |           | \$ |        |
| 1434 | 02568    |     | MOBILIZATION<br>(ADDED:3-12-19)<br>(061C00063N)  | 1.00     | LS   |           | \$ |        |
| 1435 | 02568    |     | MOBILIZATION<br>(ADDED: 3-12-19)<br>(066C00002N) | 1.00     | LS   |           | \$ |        |

### PROPOSAL BID ITEMS

195062

Page 5 of 5

Report Date 3/12/19

| LINE | BID CODE | ALT | DESCRIPTION                                      | QUANTITY | UNIT | UNIT PRIC | FP | AMOUNT |
|------|----------|-----|--|----------|------|-----------|----|--------|
| 1436 | 02568    |     | MOBILIZATION<br>(ADDED: 3-12-19)<br>(118B00079N) | 1.00     | LS   |           | \$ |        |
| 1437 | 02568    |     | MOBILIZATION<br>(ADDED: 3-12-19)<br>(118C00029N) | 1.00     | LS   |           | \$ |        |
| 1440 | 02569    |     | DEMOBILIZATION                                   | 1.00     | LS   |           | \$ |        |

### SPECIAL NOTE FOR ADDITIONAL ENVIRONMENTAL COMMITMENTS

Bundle 19.03.03

|             |         |            |
|-------------|---------|------------|
| 11-10038.00 | Bell    | 007B00040N |
| 11-10022.00 | Knox    | 061C00056N |
| 11-1102.00  | Knox    | 061C00063N |
| 11-10033.00 | Whitley | 118B00079N |
| 11-10030.00 | Whitley | 118C00029N |
| 11-10030.00 | Leslie  | 066C00002N |

In addition to other environmental commitments listed in this contract, the following commitments also apply:

- 1) The Contractor shall not go beyond the limits specified as “archaeologically cleared” or “Archaeology APE,” and shall avoid areas identified as “Do Not Disturb.” If no limits are shown on the plans, the contractor shall adhere to the stipulations in the project-specific CAP. If there is no CAP, the contractor shall confine construction work to the previously disturbed area within the existing right of way. If the areas outside the cleared areas are intended for use as laydown yards, vehicle parking, or any other activity related to the construction of this project, the Contractor must clear the area for environmental concerns.
- 2) In the event that human remains are encountered during project activities, all work should be immediately stopped in the area. The area should be cordoned off, and, in accordance with KRS 72.020, the county coroner and local law enforcement must be contacted immediately. Upon confirmation that the human remains are not of forensic interest, the unanticipated discovery must be reported to Nicolas Laracuenta at the Kentucky Heritage Council at (502) 892-3614 and George Crothers at the Office of State Archaeology at (859) 257-1944.

For guidance regarding inadvertent discovery and treatment of human remains, refer to the KYTC’s Right of Way Guidance Manual (Section ROW-1202), and the Advisory Council on Historic Preservation’s (ACHP) Policy Statement Regarding Treatment of Human Remains and Grave Goods (adopted by ACHP February 23, 2007).

- 3) If, during the implementation of The Project, a previously unidentified historic/archaeological property is discovered or a previously identified historic/archaeological property is affected in an unanticipated manner, the contractor shall (1) call KYTC DEA archaeologists at (502) 564-7250, (2) call SHPO archaeologists at (502) 892-3614, and (3) ensure that all work within a reasonable area of the discovery shall cease until such time as a treatment plan can be developed and implemented.

### Archaeologically Cleared 11-10038.00 Bell County 007B00040N

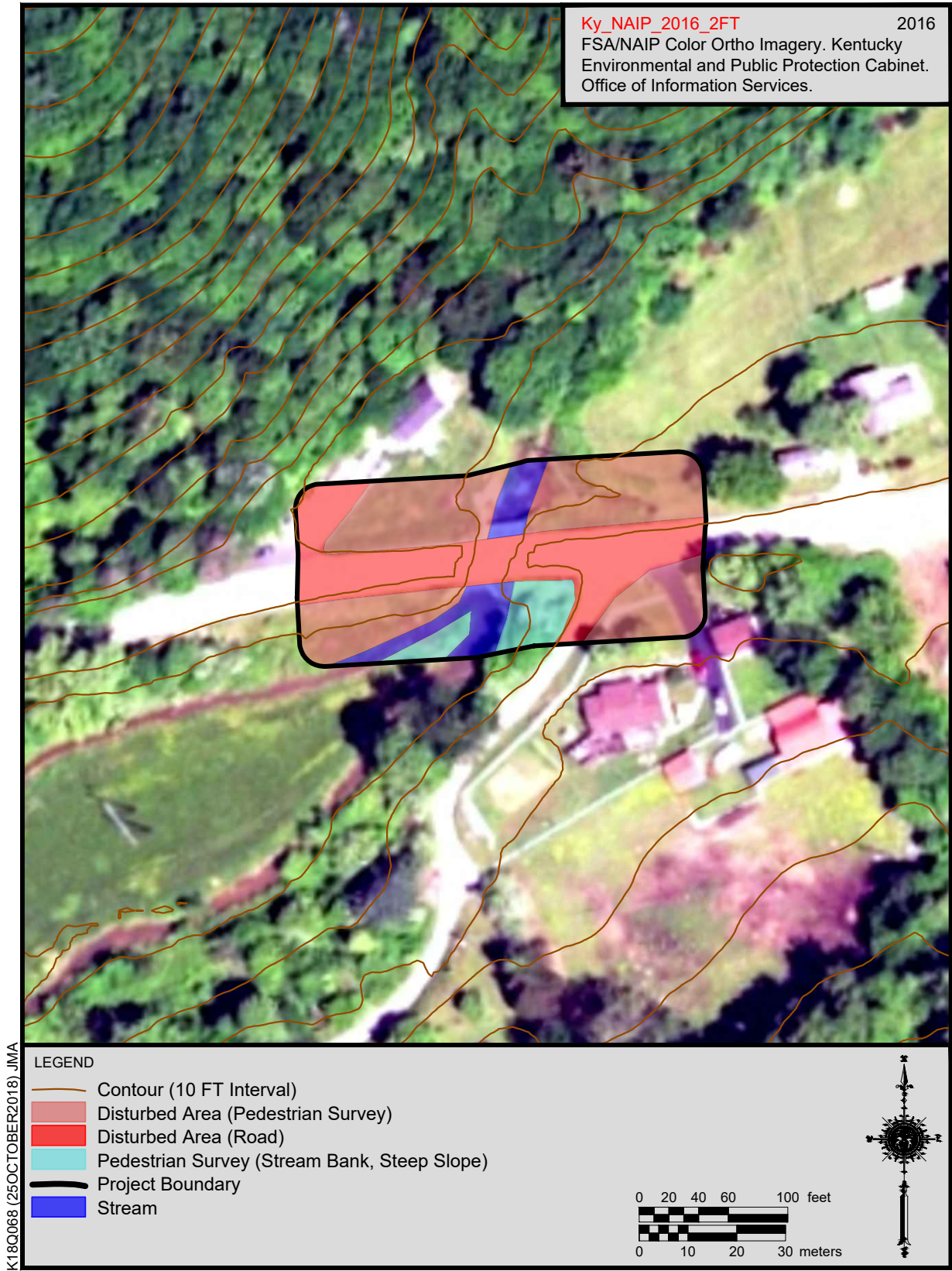


Figure 11. Project area for the KY 92 bridge over Greasy Creek (007B00040N, Item No. 11-10038.00, Bell County) on aerial map.



Archaeologically Cleared  
11-10022.00 Knox County 061C00056N



Figure 27. Project area for the Deatheridge Cemetery Road bridge over Brush Creek (061C00056N, Item No. 11-10022.00, Knox County), showing STP locations, on aerial map.

### Archaeologically Cleared 11-1102.00 Knox County 061C00063N

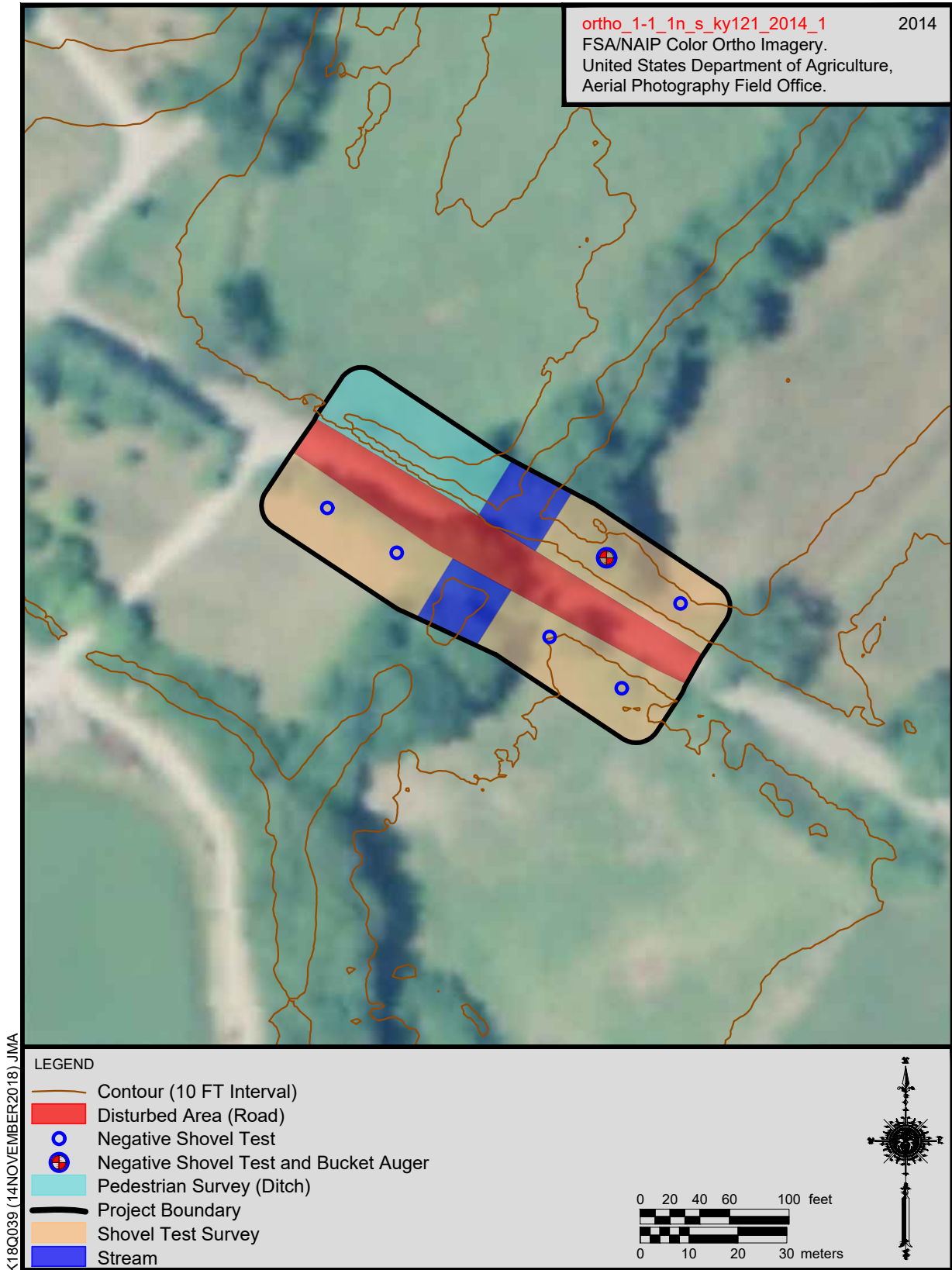


Figure 37. CR 1325 bridge (061C00063N) over the Middle Fork of Richland Creek (Item No. 11-1102.00) in Knox County showing shovel test locations on an aerial map.

Archaeologically Cleared  
11-10030.00 Leslie County 066C00002N



Figure 42. CR 1006 bridge (066C00002N) over Raccoon Creek (Item No. 11-10030.00) in Leslie County showing shovel test locations on an aerial map.

### Archaeologically Cleared 11-10033.00 Whitley County 118B00079N

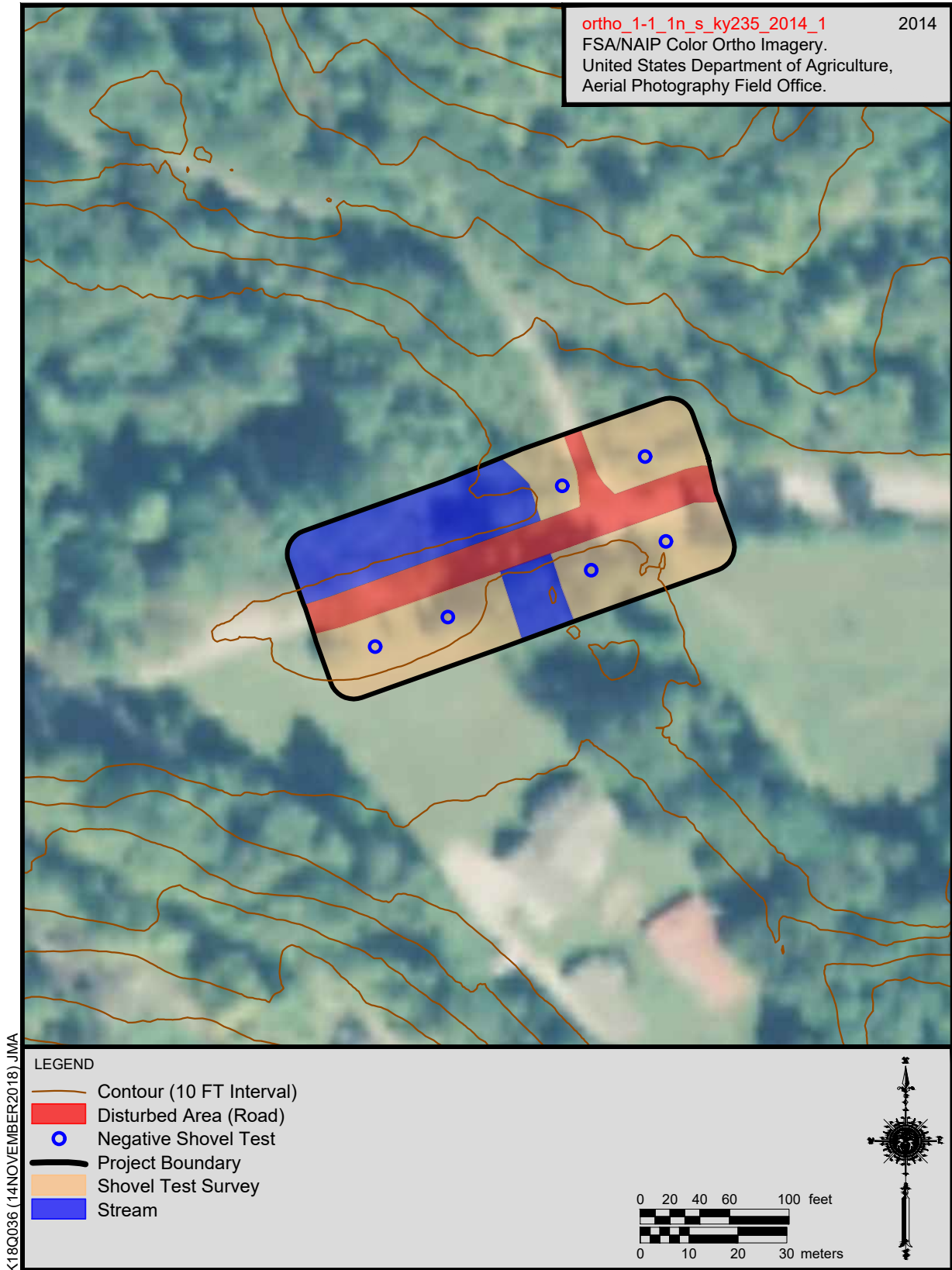


Figure 53. KY 779 bridge (118B00079N) over Browns Creek (Item No. 11-10033.00) in Whitley County showing shovel test locations on aerial map.

### Archaeologically Cleared 11-10036.00 Whitley County 118C00029N



Figure 57. CR 1275 bridge (118C00029N) over Patterson Creek (Item No. 11-10036.00) in Whitley County showing shovel test locations on aerial map.

## **Special Note For Milestone Completions**

### ***Progress Milestone Completion***

Progress Milestones are set up to ensure a continuous progression of work on the contract and state the number of bridges that must be completed by a specified date. Unless specified elsewhere in the contract, it is the Contractor's decision on which structures to complete by the milestone completion. Refer to Special Note for Liquidated Damages in this proposal. Failure to meet the required completion date for the number of structures will result in the Contractor being charged for Milestone Completion Damages equal to a percentage of the Liquidated Damages, as specified per section 108.09 of the Standard Specification applied at a rate equal to the formula below:

$$\left( \frac{\text{\# of Bridges failed to meet completion requirement}}{\text{Total \# of Bridges}} \right) \times \text{Liquidated Damage Daily Rate}$$

### ***Bridge Specific Milestone Completion***

Bridge Specific Milestones are set up for each structure and listed in the Special Note for Liquidated Damages as total days allowed for bridge closure or lane closure. In addition, certain structures may require completion by a specific date or some may not be allowed to be started until a specific date. In the event work is not complete by the specified date or within the specified range on more than one structure, Bridge Specific Milestone Completion Damages will be applied for each structure. Bridge Specific Milestone Completion Damages and the Liquidated Damage rates will be applied cumulatively.

For example, if two structures each allow for only 60 day bridge closures and both bridges are continuing to be worked on with the bridge closed at 61 days, then the Bridge Specific Milestone Completion Damages will be applied twice, once for each bridge. Also, should the Contractor violate both the specified number of days for a closure and the required completion date for that structure, Both Bridge Specific Milestone Completion Damages and Liquidated Damages will be applied cumulatively, for each violation.